

Blades for screwdrivers for slotted head screws

DIN
5264

ICS 25.140.30

Supersedes May 1991 edition.

Schraubendreher für Schrauben mit Schlitz –
Schraubendreherschnitten

In keeping with current practice in standards published by the International Organization for Standardization (ISO), a comma has been used throughout as the decimal marker.

Foreword

This standard has been prepared by Technical Committee *Schraubwerkzeuge* of the *Normenausschuss Werkzeuge und Spannzeuge* (Tools and Clamping Devices Standards Committee).

See Explanatory notes for relationship to International Standard ISO 2380-1 : 1997 published by the International Organization for Standardization.

Amendments

This standard differs from the May 1991 edition as follows:

- For type A blades for hand-operated screwdrivers, the tolerances on *b* have been harmonized with those specified in ISO 2380-1 (cf. table 1).
- Table 3 has been completely revised.
- The standard has been editorially revised.

Previous editions

DIN 5264: 1965-11, 1973-08, 1982-10, 1987-01, 1991-05.

All dimensions are in millimetres.

1 Scope

This standard specifies the dimensions and designation for blades of hand- and machine-operated screwdrivers for slotted head screws and gives the screw types and thread sizes for which such blades can be used.

Continued on pages 2 to 5.

Translation by DIN-Sprachendienst.

In case of doubt, the German-language original should be consulted as the authoritative text.

2 Normative references

This standard incorporates, by dated or undated reference, provisions from other publications. These normative references are cited at the appropriate places in the text, and the titles of the publications are listed below. For dated references, subsequent amendments to or revisions of any of these publications apply to this standard only when incorporated in it by amendment or revision. For undated references, the latest edition of the publication referred to applies.

DIN 95	Slotted raised countersunk (oval) head wood screws
DIN 96	Slotted round head wood screws
DIN 97	Slotted countersunk (flat) head wood screws
DIN 427	Slotted headless screws with chamfered end
DIN 920	Slotted pan head screws with small head
DIN 921	Slotted pan head screws with large head
DIN EN 24766	Slotted set screws with flat point (ISO 4766 : 1983)
DIN EN 27435	Slotted set screws with long dog point (ISO 7435 : 1983)
DIN EN ISO 1207	Slotted cheese head screws – Product grade A (ISO 1207 : 1992)
DIN EN ISO 1580	Slotted pan head screws – Product grade A (ISO 1580 : 1994)
DIN EN ISO 2009	Slotted countersunk flat head screws (common head style) – Product grade A (ISO 2009 : 1994)
DIN EN ISO 2010	Countersunk slotted raised head screws (common head style) – Product grade A (ISO 2010 : 1994)
ISO 1481 : 1983	Slotted pan head tapping screws
ISO 1482 : 1983	Slotted countersunk (flat) head tapping screws (common head style)
ISO 1483 : 1983	Slotted raised countersunk (oval) head tapping screws (common head style)
ISO 2380-1 : 1997	Assembly tools for screws and nuts – Screwdrivers for slotted-head screws – Part 1: Tips for hand- and machine-operated screwdrivers

3 Dimensions and designation

The designs shown below are for illustrative purposes only, but the dimensions of screwdriver blades shall be as specified.

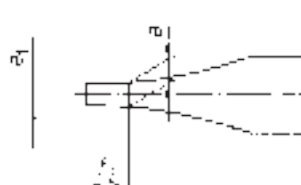
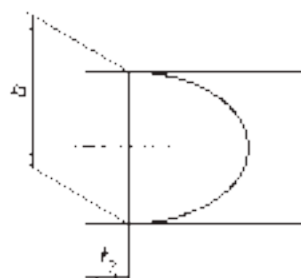
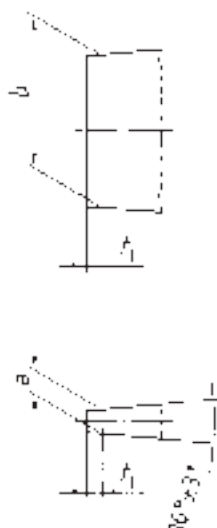


Figure 1: Dimensions of screwdriver blade
(notation)
(type A, for hand-operated screwdrivers only)

Figure 2: Dimensions of screwdriver blade
(notation)
(type B, for hand-operated screwdrivers;
type C, for machine-operated screwdrivers)

Designation of a type B screwdriver blade, with a nominal thickness, a , of 1,2 mm and a nominal width, b , of 8 mm (1,2 × 8):

Blade DIN 5264 – B 1,2 × 8